

CIPHER LAB
Smarter

1500 series



General Handheld Scanner

Bringing retail productivity and performance up to speed, the 1500 series of scanners offers powerful reliability with efficiency. Ideal for a wide range of applications from retail to healthcare and post offices, the 1500 scanner is not only advanced, but its ergonomic design also provides extreme durability – day in, day out.



1500 series

General Handheld Scanner

1500 Series Scanners from CipherLab

Accelerate your business

Handheld scanners are much faster than human fingers. Pull the trigger and the work is done instantly: complete series, update inventories, check patient records, and record production line parts and activities. Handheld scanners accelerate work with error-free capture of critical information, keeping your company data up to date and up to the minute.

Cut costs

CipherLab scanners are versatile, agile, and priced right for long-lasting value. Your company benefits from years of use, backed by a manufacturer honored in the industry for its innovative, reliable products and customer service. The 1500 series scanners capture data from regular to long barcodes with a choice of linear imager, 2D imager, or laser. Together with *Bluetooth*[®] cordless and corded applications, the 1500 series scanners help you run business more efficiently with improved operations.

Go where the work takes you

The 1500 series includes wireless scanners to unleash workers, so they can go where the work is and get more done, in more places. Our 1500 series *Bluetooth*[®] scanners connect with the communication stand up to 90 meters (295 feet) away. Beyond that, they keep working by storing information until the scanner is back in range.



Smart solutions with immediate payoffs

Accelerate receiving with fast, reliable, low-cost CipherLab 1500 handheld scanners

European retail giant Valora deployed 1,100 CipherLab 1500 scanners to improve product receiving in its Swiss sales outlets.



“After performing extensive tests, it was clear that the CipherLab scanner performed much better than any of the other solutions. We had no previous experience with CipherLab and were positively surprised with its error-free scans, reliability, and the convincing value for money it offers.”

Christian Wurger, Head of the Corporate IT Operation/ Support, Valora, Switzerland

Streamline tracking and delivery with wireless CipherLab *Bluetooth*[®] scanners

To ensure better tracking and delivery of mail and goods, Brazil's ECT, the largest post office in Latin America, relies on the flexibility and productivity of CipherLab *Bluetooth*[®] scanners.



“With the new scanners, employees can easily reach the items to scan. They can walk around outdoors and scan packages in the unloading/departing zones, allowing them to work faster and get more work done. And the database is always updated when they are back in wireless range.”

Marcel Gomes, Complex Solutions Provider for ECT, Brazil.

Update stock and reply distribution requirements in real time with wireless CipherLab *Bluetooth*[®] scanners

To ensure accurate CD/DVD replenishment, ASDA/Wal-Mart combines the wireless connectivity of CipherLab *Bluetooth*[®] scanners and Smartphones/PDAs to instantly send stocking requirements to the distribution center.



“After searching worldwide for scanners with good communication capabilities, we found CipherLab *Bluetooth*[®] scanners with high-quality and reliable performance. CipherLab scanners not only provide real-time stocking updates, but also record deliveries made to the actual supermarkets, which improves the efficiency of our business operation.”

Altaf Sadique, CEO, Gane Data LTD., United Kingdom

Snappy scanning, speedy decoding

The 1500 series with linear imaging reader scan and decode barcodes up to 200 times per second to speed work, eliminate rescans and keep up with your fastest operation. This high speed delivered with low power consumption makes auto-sense scanning very effective.

Wireless freedom

Range of Operation

The 1500 series *Bluetooth*® wireless scanners have a 90-meter line-of-sight range from the communication stand. If it's not in range, with the optional linear imager and laser scanners, the scanner's buffer memory holds up to 256 scans in reserve, ready to transmit automatically when you're back in range again. Or, use batch mode to record over 32,000 scans – that's freedom to roam widely. The 1500 *Bluetooth*® scanner with 2D reader has a buffer memory of 10 K or 4 MB in batch mode.

House of Wireless Power

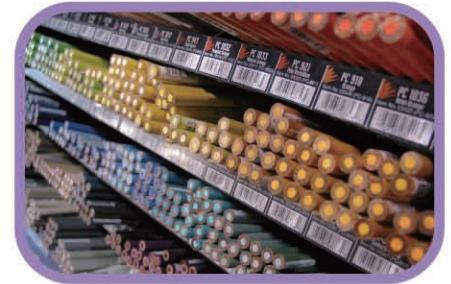
CipherLab offers you the multi-shift service with the 1500 series *Bluetooth*® scanner. Without interruption of workflow, users get to finish work more productively and efficiently.

A Great Variety at Your Fingertips

Every business is different and has different scanning needs, which is why CipherLab have a broad range of scanners to suit any businesses whatever their needs. The 1500 series comes in a range of varieties. The linear imager scanner offers the option of reading long barcodes, for example the ones on bills, making it suitable for utility companies, banks, and collecting agencies. The option of 2D imager is good for scanning barcodes on medicine packaging or hospital equipments making them suited for pharmaceutical or hospitals.

PC Software to Custom-Configure Scanners to Any Environment

CipherLab **ScanMaster** software provides comprehensive tools to configure any scanner, such as enabling and disabling hands-free scanning, choosing edit format and symbology types, plus more. With ScanMaster, scanners can be easily customized to fit every working environment. ScanMaster for PC is included with all CipherLab scanners. In addition, 1500 series is also supported by **CipherConnect** which is a COM-to-key utility designed for CipherLab *Bluetooth*® scanners to work as an input device for smart devices, such as Smartphone or PDA. The software enables intensive data collection and transmission via CipherLab *Bluetooth*® scanner to the smart device.



1500 series

General Handheld Scanner



		1500, 1500WA		1560	1502	1562	1504, 1504A		1564A			
Category		Linear Imager			Laser			2D Imager				
		Corded	Bluetooth® Class 2 (2.4 GHz) Version 2.1+EDR		Corded	Bluetooth® Class 2 (2.4 GHz) Version 2.1+EDR		Corded	Bluetooth® Class 2 (2.4 GHz) Version 2.1+EDR			
RF Communication of Bluetooth® scanner	Coverage	--	90 m ² / 295 ft. line of sight		--	90 m ² / 295 ft. line of sight		--	90 m ² / 295 ft. line of sight			
	Standard profile	--	SPP, HID		--	SPP, HID		--	SPP, HID			
Performance		Optical sensor	2500 pixels			Laser			752 x 480 pixels			
		Light source	Red LED 625 nm	Red LED 618-626 nm		Visible laser diode at 650 ± 15 nm			625 ± 5 nm LEDs (2x)			
		Resolution	3 mil			4 mil			3 mil - 1D barcode / 5 mil - 2D barcode			
		Depth of field (13 mil barcode)	1500: 0.5 to 35 cm / 0.2 to 13.8 in. (1500WA: long barcode 8.2 cm, 8 mil - 7.5 to 14.5cm / 3 to 5.7 in.)			2 to 57 cm / 0.8 to 22.4 in.			Code 39 3 mil: 6.9 to 10.7 cm / 2.7 to 4.2 in. Code 39 5 mil: 3.6 to 18.5 cm / 1.4 to 7.3 in. UPCA 13 mil: 4 to 30.5 cm / 1.6 to 12 in. PDF417 5 mil: 2.8 to 4.5 cm / 1.1 to 1.8 in. PDF417 6.67 mil: 4.8 to 17.5 cm / 1.9 to 6.9 in.			
		Scanning angle	Pitch ± 70° Skew ± 70°			Pitch ± 65° Skew ± 50°			Pitch ± 60° Skew ± 60°			
		PCS	Minimum 30%			Minimum 45%			Minimum 30%			
		Scan rate	200 scans/ second (1500WA: 100 scans/ second)			100 scans/ second			60 scans/ second			
		Ambient illumination	100,000 lux			100,000 lux			100,000 lux			
		Hands-free scanning	Auto-sense and continuous modes			Continuous mode			Auto-sense mode, continuous mode, and presentation mode			
		Barcodes support	Codabar, Code 39, Code 93, Code 128, GS1 DataBar (RSS), Industrial 2 of 5, Interleave 2 of 5, ISBT-128, Italian and French Pharmacodes, Matrix 2 of 5, MSI, Plessey, Telepen, UPC / EAN / GS1-128, and more						1D: All of the barcodes that 1500 series 1D scanners can support except French Pharmacodes, Plessey and Telepen 2D: PDF417, MicroPDF417, Composite, RSS, TLC-39, Datamatrix, QR code, Micro QR code, Aztec, MaxiCode Postal Codes: US PostNet, US Planet, UK Postal, Australian Postal, Japan Postal Dutch Postal (KIX)			
		Programmable features	Data editing, interface selection, symbology configuration			Data editing, interface selection, symbology configuration			Data editing, interface selection, symbology configuration			
		Language support	US and UK English, French, Italian, Belgian, Norwegian, Swedish, Spanish, Portuguese, German, Swiss German, Japanese, Turkish, Hungarian, and Danish			US and UK English, French, Italian, Belgian, Norwegian, Swedish, Spanish, Portuguese, German, Swiss German, Japanese, Turkish, Hungarian, and Danish			US and UK English, French, Italian, Belgian, Norwegian, Swedish, Spanish, Portuguese, German, Swiss German, Japanese, Turkish, Hungarian, and Danish			
		Physical		Dimension L x W x H	15.3 x 6.1 x 9.3 cm / 6.0 x 2.4 x 3.7 in.			15.3 x 6.1 x 9.3 cm / 6.0 x 2.4 x 3.7 in.			15.3 x 6.1 x 9.3 cm / 6.0 x 2.4 x 3.7 in.	
				Weight without cable / with battery	145 g / 5.1 oz.	173 g / 6.1 oz.	149 g / 5.2 oz.	177 g / 6.2 oz.	154 g / 5.4 oz.	185 g / 6.5 oz.	154 g / 5.4 oz.	185 g / 6.5 oz.
Color	Black			Black			Black					
Switch	Tactile Switch			Tactile Switch			Tactile Switch					
Electrical		Memory for Bluetooth® scanner reserver buffer / batch mode	--	4 K / 512 K	--	4 K / 512 K	--	10K / 4 MB	10K / 4 MB			
		Working hours for Bluetooth® scanner	--	24 / 12 hours* based on 1 scan / 5 seconds	--	24 hours based on 1 scan / 5 seconds	--	26 hours based on 1 scan / 5 seconds	26 hours based on 1 scan / 5 seconds			
		Voltage	+5 V ±10% / 3.7 V 800 mAh Li-ion battery			+5 V ±10% / 3.7 V 800 mAh Li-ion battery			+5 V ±10% / 3.7 V 800 mAh Li-ion battery			
		Power consumption ³ Standby / Operating	50 mA / 265 mA	45 mA / 270 mA	35 mA / 210 mA	25 mA / 210 mA	1504: 30mA / 280mA 1504A: 22mA / 150mA	22mA / 166mA	22mA / 166mA	22mA / 166mA		
User Environment		Temperature	Operating: 0°C to 50°C / 32°F to 122°F Storage: -20°C to 60°C / -4°F to 140°F			Operating: 0°C to 50°C / 32°F to 122°F Storage: -20°C to 60°C / -4°F to 140°F			Operating: 0°C to 50°C / 32°F to 122°F Storage: -20°C to 60°C / -4°F to 140°F			
		Humidity	Operating: 10% to 90% Storage: 5% to 95%			Operating: 10% to 90% Storage: 5% to 95%			Operating: 10% to 90% Storage: 5% to 95%			
		Impact resistance	1.5 m (4.9 ft) multiple drops onto concrete	1.2 m (3.9 ft) multiple drops onto concrete			1.2 m (3.9 ft) multiple drops onto concrete			1.2 m (3.9 ft) multiple drops onto concrete		
		Ingress protection	IP30			IP30			IP30			
		Electrostatic discharge	±8 kV contact ±15 kV air			±8 kV contact ±15 kV air			±8 kV contact ±15 kV air			
		EMC regulation	1500: BSMI, CE, C-tick, FCC, IC, KC 1500WA: BSMI, CE, C-tick, FCC, IC	BSMI, CE, C-tick, FCC, IC, KC, NCC, SRMC, TELECOM	BSMI, CE, C-tick, FCC, IC, KC	BSMI, CE, C-tick, FCC, IC, KC, NCC, SRMC, TELECOM	1504: BSMI, CE, C-tick, FCC, IC, KC 1504A: BSMI, CE, C-tick, FCC, IC	BSMI, CE, C-tick, FCC, IC, NCC, KC, SRMC, TELECOM	BSMI, CE, C-tick, FCC, IC, NCC, KC, SRMC, TELECOM	BSMI, CE, C-tick, FCC, IC, NCC, KC, SRMC, TELECOM		
Configuration	Setup options include Windows-based ScanMaster software, by direct connection or printing out barcode settings			Setup options include Windows-based ScanMaster software, by direct connection or printing out barcode settings			Setup options include Windows-based ScanMaster software, by direct connection or printing out barcode settings					
Accessories	USB, RS232 and keyboard wedge cables, hands-free adjustable stand. Three-way desk/wall/auto-sense stand with optional weighted base, communication stand for Bluetooth® scanner provides Bluetooth® communication for up to 7 scanners, single battery charger for Bluetooth® scanner			USB, RS232 and keyboard wedge cables, hands-free adjustable stand. Three-way desk/wall/auto-sense stand with optional weighted base, communication stand for Bluetooth® scanner provides Bluetooth® communication for up to 7 scanners, single battery charger for Bluetooth® scanner			USB, RS232 and keyboard wedge cables, hands-free adjustable stand. Three-way desk/wall/auto-sense stand with optional weighted base, communication stand for Bluetooth® scanner provides Bluetooth® communication for up to 7 scanners, single battery charger for Bluetooth® scanner					
Warranty	5 years	3 years	3 years	3 years	3 years	3 years	3 years	3 years				

1. It is based on communication stand without weighted base. 2. All of the barcodes that 1500 series 2D scanners can read except French Pharmacode, Plessey, Telepen, and ISBT-128 (1504A only). 3. The data is tested with USB interface. 4. Depending on the CCD Sensor mode setting: Always Active function disabled / enabled, and default setting.



HEADQUARTERS
CipherLab Co., Ltd.
 12F, 333 Dunhua S. Rd., Sec.2
 Taipei, Taiwan 10669
 Tel +886 2 8647 1166
 Fax +886 2 8732 3300
 www.cipherlab.com

CipherLab Electronics Trading
(Shanghai) Co., Ltd.
 J Room, 4F, No.728 West Yan'an Rd.
 Changning District, Shanghai
 China 200050
 Tel +86 21 3368 0288
 Toll Free +86 400 920 0285
 Fax +86 21 3368 0286

CipherLab USA Inc.
 2552 Summit Avenue STE 400
 Plano, Texas USA 75074
 Tel +1 469 241 9779
 Toll Free 888 300 9779
 Fax +1 469 241 0697

CipherLab GmbH
 Gießerallee 21
 47877 Willich
 Germany
 Toll +49 2154 89777 20
 Fax +49 2154 89777 32